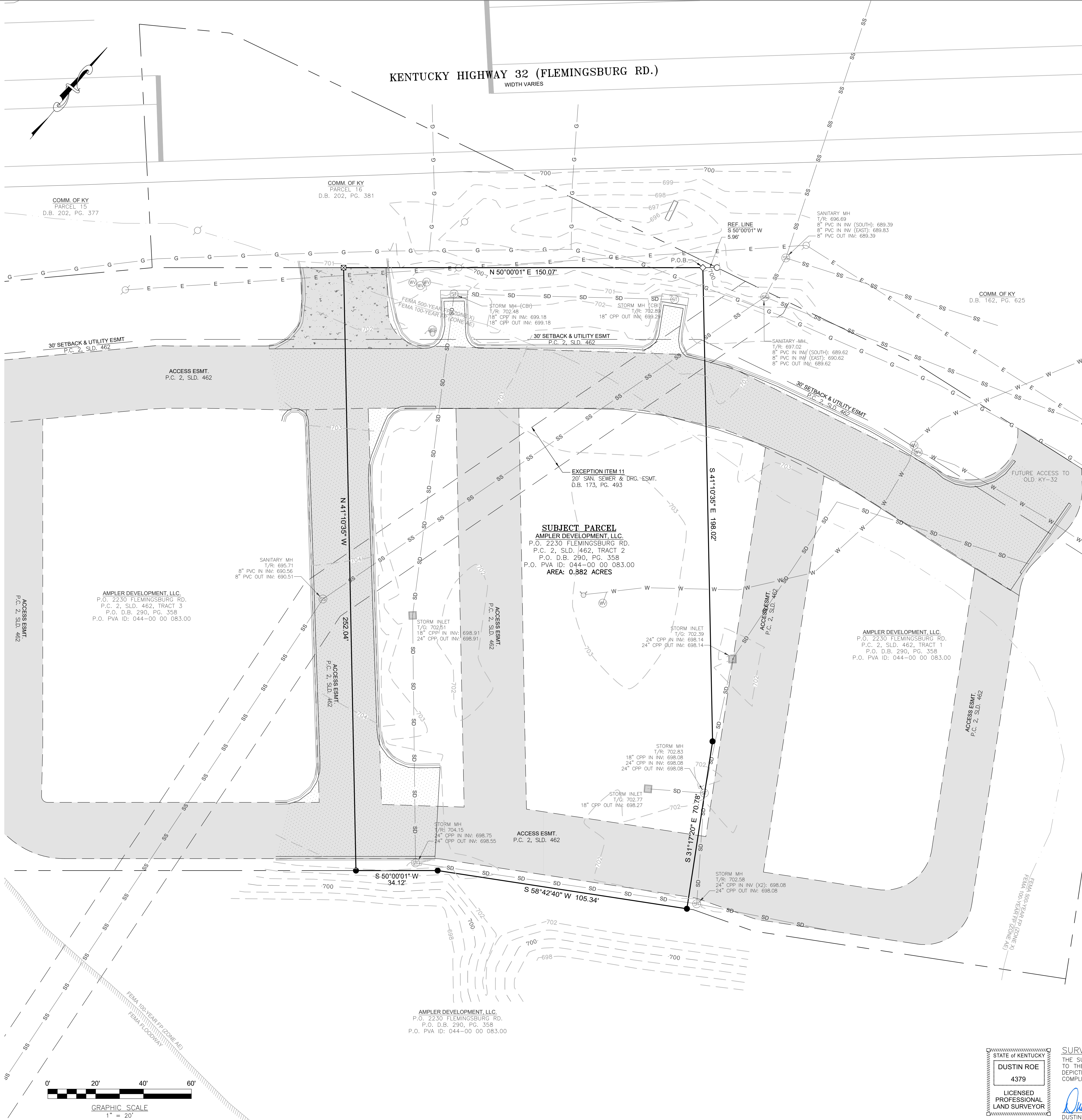


UTILITY PROVIDERS
MOREHEAD UTILITY PLANT BOARD (GAS & SEWER)
135 S. WILSON
MOREHEAD, KY 40351
(606) 784-5538
ROWAN WATER INC. (WATER)
1765 CHRISTY CREEK ROAD
MOREHEAD, KY 40351
(606) 784-9818
FLEMING MASON ENERGY (ELECTRIC)
1449 ELIZAVILLE ROAD
FLEMINGSBURG, KY 41041
(800) 464-3144
WINDSTREAM OF KENTUCKY (COMMUNICATIONS/TELEPHONE)
154 E. SECOND ST
MOREHEAD, KY 40351
(606) 784-2948

ABBREVIATIONS
D.B. DEED BOOK
PG. PAGE
P.C. PLAT CABINET
SLD. SLIDE
P.O. PORTION OF
P.O.B. POINT OF BEGINNING
REF. REFERENCE
COR. CORNER
E. CENTERLINE
ESMT. EASEMENT
EX. EXISTING



PURPOSE OF PLAT
THE PURPOSE OF THIS PLAT IS TO DEPICT A TOPOGRAPHICAL SURVEY, AS DEPICTED HEREON.

SOURCE OF TITLE
THE SUBJECT PARCEL SHOWN HEREON, BEING A PORTION OF THE PARCEL CONVEYED TO AMPLER DEVELOPMENT, LLC., A DELEWARE LIMITED LIABILITY COMPANY ON DECEMBER 29, 2023 FROM ROWAN COUNTY BOARD OF EDUCATION, OF RECORD IN DEED BOOK 290, PAGE 358 IN THE ROWAN COUNTY KENTUCKY CLERK'S OFFICE, AND BEING DEPICTED AS TRACT 2 ON PLAT OF RECORD IN PLAT CABINET 2, SLIDE 462 IN SAID OFFICE.

SOURCE OF SURVEY & CERTIFICATE OF ACCURACY
THIS PLAT IS BASED ON A FIELD SURVEY CONDUCTED ON THE GROUND FROM 04/30/2024 TO 09/10/2024. THE BASIS OF BEARINGS ARE DERIVED FROM EXISTING SITE CONTROL AND PROJECT PLANS BEING USED FOR THE DEVELOPMENT OF ADJOINING TRACT 3, SET BY OK4 ENGINEERING, REFERENCEING NAVD83(2011) KENTUCKY STATE PLANE SINGLE ZONE. ALL DISTANCES SHOWN ON THIS PLAT ARE EXPRESSED IN US SURVEY FEET. GRID DISTANCE. THE VERTICAL DATUM USED IS NAVD88 ORTHOMETRIC HEIGHT (GEOID 18). CARLSON BRX7 MULTI-FREQUENCY BASE AND ROVER RECEIVERS WERE USED IN RTK MODE TO CONDUCT 100% OF THE BOUNDARY SURVEY BY METHOD OF REDUNDANT OBSERVATIONS. THE POSITIONAL ACCURACY AND PRECISION OF THE SURVEY IS GREATER THAN 0.05+100 PPM BASED ON LEAST SQUARES ANALYSIS OF THE DATA AND WAS NOT ADJUSTED FOR CLOSURE. THIS PLAT AND SURVEY MEET THE MINIMUM STANDARDS FOR A "URBAN" SURVEY AS DEFINED IN 201 KAR 18:150.

SURVEY NOTES
1. DOCUMENTS OF RECORD REVIEWED AND CONSIDERED AS A PART OF THIS SURVEY ARE NOTED HEREON; THE DOCUMENTS LISTED, IN ADDITION TO OTHER DOCUMENTS NOT LISTED ON THIS PLAT MAY HAVE BEEN CONSIDERED AND REVIEWED TO COMPLETE THIS SURVEY. NO ABSTRACT OF TITLE COMMITMENT, NOR THE RESULTS OF TITLE SEARCHES WERE FURNISHED TO THE SURVEYOR. FURTHER, ANY ADDITIONAL DOCUMENTS NOT OF PUBLIC RECORD MAY EXIST THAT COULD AFFECT THIS PARCEL(S).
2. PARCEL IS SUBJECT TO ALL LEGAL EASEMENTS OF RECORD OR OTHERWISE.
3. THE LOCATIONS OF UNDERGROUND UTILITIES DEPICTED HEREON WERE DERIVED FROM EVIDENCE VISIBLE AT THE SURFACE, REVIEW OF GOVERNMENTAL GIS DATA BASE MAPS, BY MARKS PLACED ON THE GROUND BY LOCAL 811 UTILITY CONTRACTORS AND BY THE EXISTING PROJECT PLANS SUPPORTING THE DEVELOPMENT OF ADJOINING TRACT 3. LACKING EXCAVATION, THE EXACT LOCATION OF UNDERGROUND UTILITY FACILITIES CANNOT BE ACCURATELY, COMPLETELY OR RELIABLY DEPICTED; AND THEREFORE, THE DEPICTED UNDERGROUND UTILITIES SHOULD BE CONSIDERED APPROXIMATE.
4. THE SUBJECT PARCEL WAS OBSERVED TO LIE WITHIN AN AREA ZONED AS B-2 (HIGHWAY BUSINESS) BY THE CITY OF MOREHEAD, KENTUCKY, AND IS SUBJECT TO THE CONDITIONS AND RESTRICTIONS OF SAID ZONE, AS DEFINED IN THE CITY OF MOREHEAD, KENTUCKY CHAPTER 154: ZONING CODE.
5. THE CONTOURS SHOWN HEREON, REPRESENT THE EXISTING SUBGRADE TOPOGRAPHICAL CONDITIONS TAKEN ON 7-17-2024, AND REVISED ON 9-10-2024, AND COULD BE SUBJECT TO ALTERATIONS.

TOPOGRAPHIC LEGEND	
---	EXISTING MINOR CONTOUR (1FT)
---	EXISTING MAJOR CONTOUR (5FT)
---	FEMA 100-YEAR FLOOD ZONE AE
---	FEMA FLOODWAY
G G	GAS LINE
T T	OVERHEAD COMMUNICATION LINE
E E	OVERHEAD ELECTRIC LINE
SD SD	STORM SEWER PIPE
SS SS	SANITARY SEWER PIPE
W W	WATER LINE
○	UTILITY POLE
○	LIGHT POLE
○	UTILITY POLE ANCHOR
△	CONTROL POINT
⊕	GAS METER
⊕	GAS VALVE
⊕	WATER METER
⊕	WATER VALVE
⊕	FIRE HYDRANT
⊕	STORM SEWER MANHOLE
⊕	STORM SEWER INLET
⊕	SANITARY SEWER MANHOLE
⊕	CLEAN-OUT
⊕	ELECTRIC BOX
⊕	ELECTRIC METER
⊕	TELEPHONE BOX
⊕	SIGN
⊕	BOLLARD
⊕	AC UNIT

BOUNDARY LEGEND	
●	3/4"x18" REBAR W/ ORANGE PLASTIC CAP STAMPED "WESTEK ROE PLS 4379" (SET THIS SURVEY)
●	2" MAG-NAIL W/ ALUMINUM WASHER STAMPED "WESTEK ROE PLS 4379" (SET THIS SURVEY)
◇	FOUND 3/4" REBAR W/ PLASTIC CAP STAMPED "CARR PLS 3812"
◇	FOUND 3/4" REBAR W/ 2" ALUM. CAP STAMPED "CS PLS 2766"
⊕	FOUND CHISLED "X"
---	BOUNDARY LINE
---	APPROXIMATE ADJOINING BOUNDARY LINE
---	CENTERLINE
---	EXISTING FENCELINE
---	IMPROVEMENTS
---	ACCESS ESMT. (P.C. 2, SLD. 462)

STATE OF KENTUCKY
DUSTIN ROE
4379
LICENSED
PROFESSIONAL
LAND SURVEYOR

SURVEYOR CERTIFICATION
THE SURVEY DEPICTED BY THIS PLAT WAS CONDUCTED UNDER MY DIRECT SUPERVISION AND, TO THE BEST OF MY KNOWLEDGE AND BELIEF, THE BOUNDARIES OF THE PROPERTY BEING DEPICTED ARE TRUE AND ACCURATE. THIS PLAT REPRESENTS A BOUNDARY SURVEY THAT COMPLIES WITH 201 KAR 18:150.
DUSTIN ROE
KY PLS #4379
DATE
9-11-2024

WESTEK
ENGINEERING, LLC
544 Morehead, Kentucky 40351
(606) 784-0172

SURVEY PREPARED FOR:
CWM Architects and Engineers
249 E. Main St., Suite 100,
Lexington, KY 40507

BOUNDARY AND TOPOGRAPHICAL SURVEY
TRACT 2, AMPLER DEVELOPMENT LLC (FORMERLY ROWAN CO. BOARD OF EDU.)
2230 FLEMINGSBURG ROAD
MOREHEAD, ROWAN COUNTY, KENTUCKY

This Plat represents a Boundary Survey that complies with 201 KAR 18:150

JOB #: S24DR33

REVISION:
REV 1 9/11/2024-Added As-built Pavement, Curb, 4 Water Valves and 1 Fire hydrant, constructed as a part of adjoining Tract 3 development. Removed Overhead Telephone line. All as shown herein.

DWG FILE:
2230 Flemingsburg, Tract 2 TOPG_REV1_9-11-24

CRD FILE:
burger-king-morehead-1600.crd

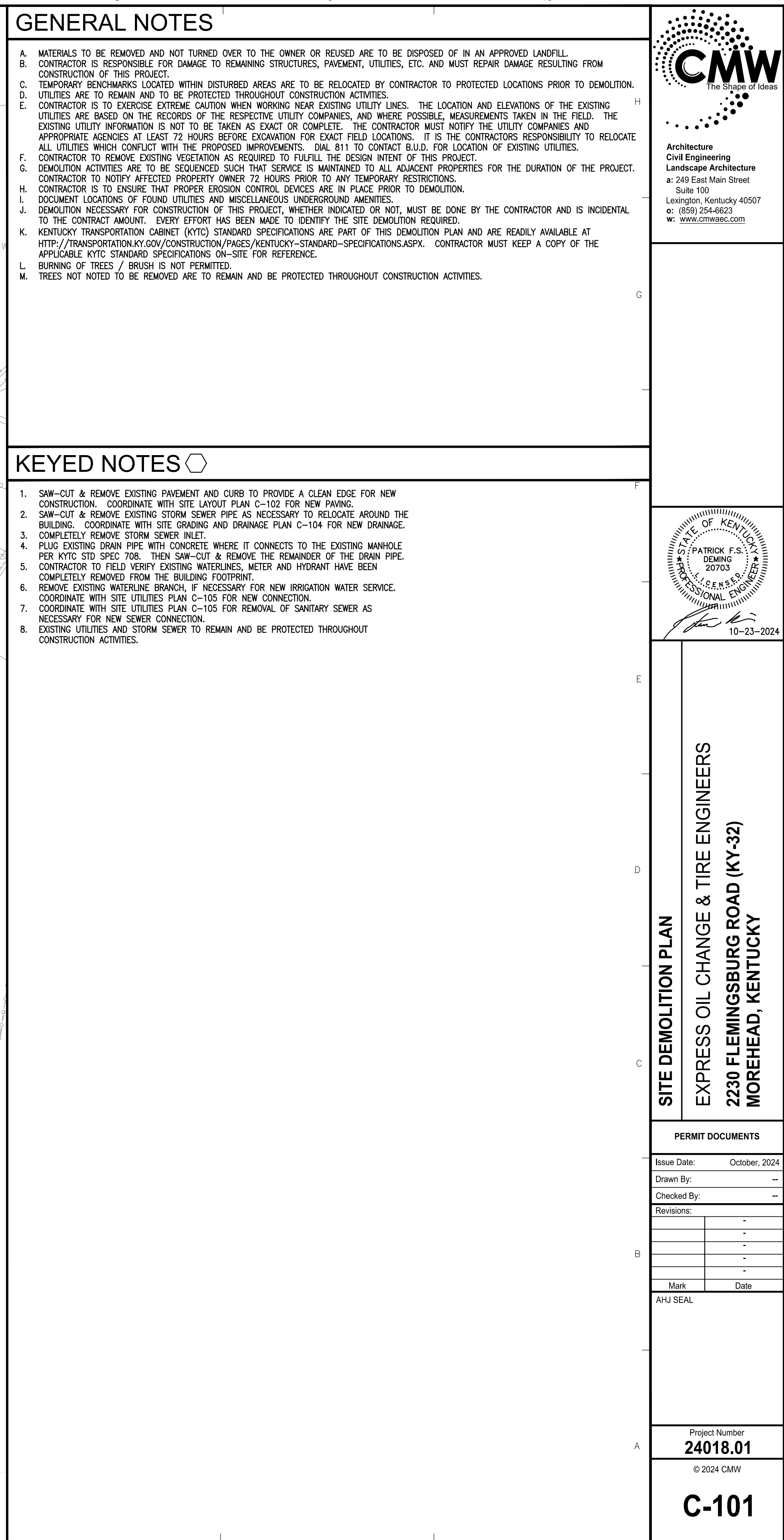
DRAWN BY: DER

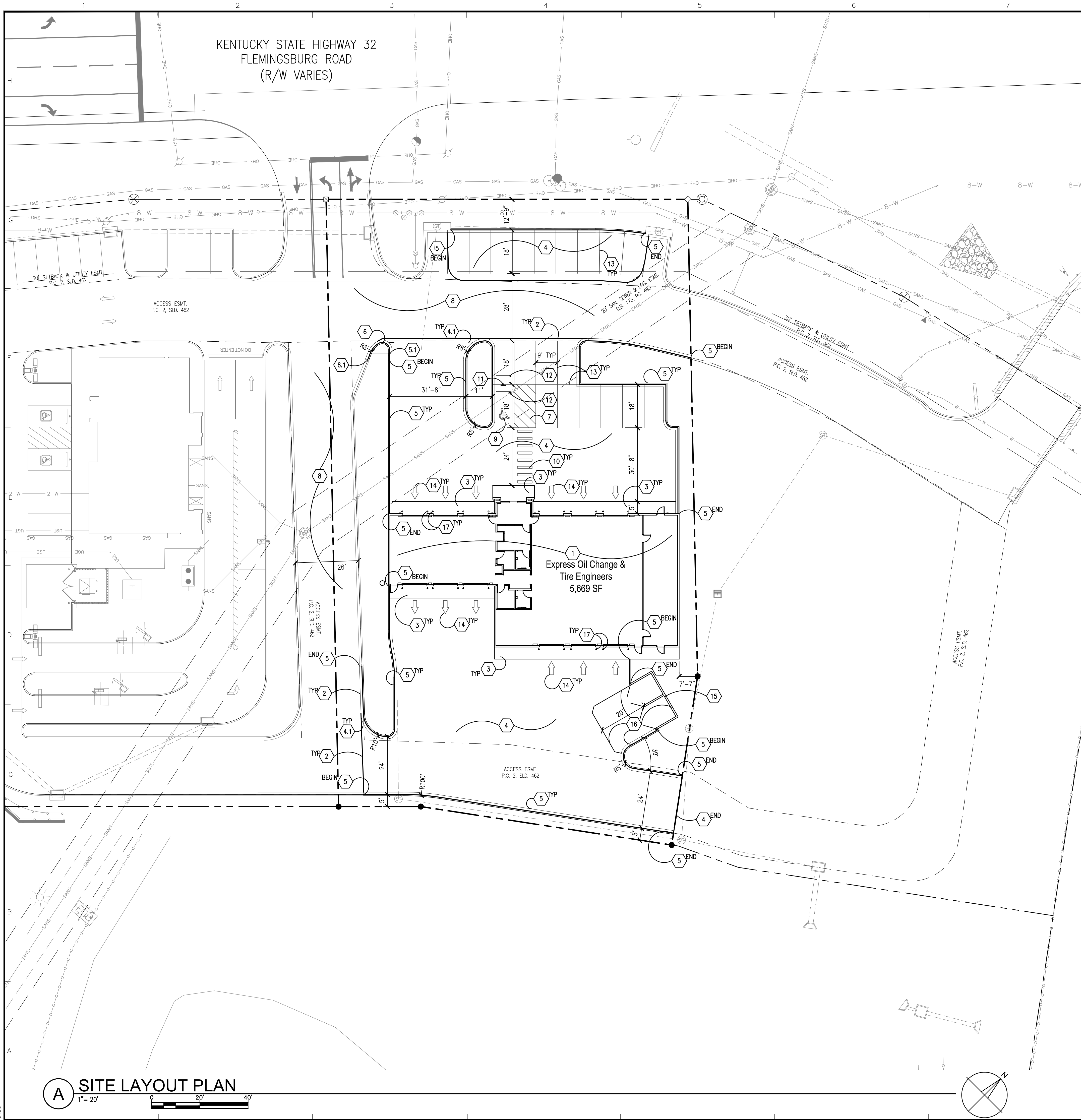
CHECKED BY: DER



- KENTUCKY DEPARTMENT OF ENVIRONMENTAL PROTECTION CONTACT
INFORMATION MUST BE DISPLAYED ON THE CONSTRUCTION SIGN AND
MADE VISIBLE TO THE PUBLIC.
- ENVIRONMENTAL RESPONSE TEAM (502) 564-2380
 - EMERGENCY 24 HOUR NUMBER (502) 928-2380

C-100



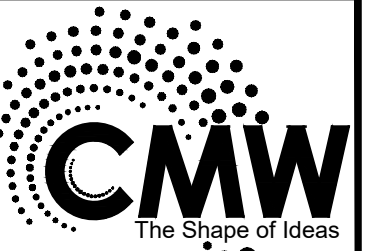


GENERAL NOTES

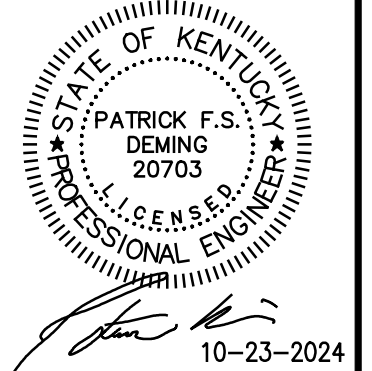
- DIMENSIONS ARE TO THE FACE OF BUILDING, FACE OF CURB, EDGE OF PAVEMENT, AND/OR CENTER OF STRIP, UNLESS OTHERWISE NOTED.
- DIMENSIONS ARE PARALLEL / PERPENDICULAR TO THE FACE OF BUILDING, UNLESS OTHERWISE NOTED.
- CURB RADI ARE 3'-0", UNLESS OTHERWISE NOTED.
- EXPANSION JOINT REQUIRED WHERE NEW CONCRETE ABUTS EXISTING CONCRETE, BUILDINGS/ FOUNDATIONS, AND ANY OTHER FIXED OBJECTS.
- EXPANSION JOINTS REQUIRED MAXIMUM 40' O.C. AND WITHIN THE SPACING MODULE OF THE CONTROL JOINTS.
- EXERCISE EXTREME CAUTION WHEN WORKING NEAR EXISTING UTILITY LINES. EXISTING UTILITY INFORMATION IS NOT TO BE TAKEN AS EXACT OR COMPLETE. CONTRACTOR MUST NOTIFY THE UTILITY COMPANIES AND APPROPRIATE AGENCIES AT LEAST 72 HOURS BEFORE EXCAVATION FOR EXACT FIELD LOCATIONS. IT IS THE CONTRACTORS RESPONSIBILITY TO RELOCATE UTILITIES WHICH CONFLICT WITH THE PROPOSED IMPROVEMENTS. DIAL 811 TO CONTACT B.U.D. FOR LOCATION OF EXISTING UTILITIES.
- CONTRACTOR IS RESPONSIBLE FOR DAMAGE TO ANY STRUCTURE, PAVEMENT, UTILITY, PIPE, ETC. TO REMAIN AND SHALL REPAIR OR REPLACE THE DAMAGED ITEM AS NECESSARY TO RETURN IT TO PRE-CONSTRUCTION CONDITIONS WITH THE COST BEING INCIDENTAL TO THE CONTRACT AMOUNT.
- DOCUMENT LOCATIONS OF FOUND UTILITIES AND MISCELLANEOUS UNDERGROUND AMENITIES.
- CONTRACTOR TO FIELD VERIFY ALL DIMENSIONS PRIOR TO LAYOUT FOR NEW CONSTRUCTION.
- KENTUCKY TRANSPORTATION CABINET (KYTC) STANDARD SPECIFICATIONS ARE PART OF THESE PLANS AND ARE READILY AVAILABLE AT [HTTP://TRANSPORTATION.KY.GOV/CONSTRUCTION/PAGES/KENTUCKY-STANDARD-SPECIFICATIONS.ASPX](http://TRANSPORTATION.KY.GOV/CONSTRUCTION/PAGES/KENTUCKY-STANDARD-SPECIFICATIONS.ASPX). CONTRACTOR MUST KEEP A COPY OF THE APPLICABLE KYTC STANDARD SPECIFICATIONS ON-SITE FOR REFERENCE.
- KYTC STANDARD DRAWINGS ARE PART OF THESE PLANS AND ARE READILY AVAILABLE AT [HTTP://TRANSPORTATION.KY.GOV/HIGHWAY-DESIGN/PAGES/STANDARD-DRAWINGS.ASPX](http://TRANSPORTATION.KY.GOV/HIGHWAY-DESIGN/PAGES/STANDARD-DRAWINGS.ASPX). CONTRACTOR TO KEEP A COPY OF THE APPLICABLE KYTC STANDARD DRAWINGS ON-SITE FOR REFERENCE.

KEYED NOTES

- SEE BUILDING PLANS FOR EXACT BUILDING DIMENSIONS.
- COORDINATE WITH SITE DEMOLITION PLAN AND SAW-CUT & REMOVE EXISTING ASPHALT AS NECESSARY FOR NEW CONSTRUCTION.
- 5'-0" WIDE HEAVY-DUTY CONCRETE PAVEMENT ALONG THE FRONT AND BACK OF THE BUILDING PER DETAIL F/C-110. PROVIDE TOOLED CONTROL JOINTS EQUALLY SPACED AT 5'± O.C. PER DETAIL E/C-110. PROVIDE EXPANSION JOINTS WITHIN THE SPACING MODULE OF THE CONTROL JOINTS AT A MAXIMUM OF 40'± APART AND WHERE NEW CONCRETE ABUTS THE BUILDING & ABUTS EXISTING CONCRETE PER DETAIL D/C-110.
- ASPHALT PAVEMENT AND BASE PER DETAIL A/C-110.
 - SUBSTITUTE CONCRETE FLOWABLE FILL FOR ASPHALT BASE WHERE SPACE WILL NOT ALLOW FOR COMPACTION WITH A TANDEM ROLLER PER DETAIL C/C-110, TYPICAL.
- CONCRETE CURB AND GUTTER PER DETAIL B/C-110. PROVIDE EXPANSION JOINTS 40' APART MAXIMUM, AT ANGLE CHANGES OF DIRECTION, AT RADI POINTS OF INTERSECTION, AND WHERE NEW CONCRETE ABUTS THE BUILDING & ABUTS EXISTING CONCRETE PER DETAIL D/C-110.
 - TAPER TOP OF CONCRETE CURB TO BE FLUSH WITH ISLAND CURB OVER 3'.
- CONCRETE ISLAND CURB, GUTTER AND MEDIAN AT THE BEGINNING OF THE LANDSCAPE ISLAND PER DETAIL L/C-110.
 - TAPER ISLAND CURB TO BE FLUSH WITH EXISTING CURB OVER 3'.
- ACCESSIBLE AISLE WITH 6" WIDE BLUE THERMOPLASTIC BORDER AND 6" WIDE BLUE THERMOPLASTIC STRIPES AT 45° ANGLE AND 3' O.C. TYPICAL OF ALL ACCESSIBLE AISLES. THERMOPLASTIC TO MEET KYTC STD SPEC 717.
- EXISTING PAVEMENT TO REMAIN AND BE PROTECTED THROUGHOUT ALL CONSTRUCTION ACTIVITIES.
- BLUE THERMOPLASTIC ACCESSIBLE PARKING SYMBOL PER DETAIL G/C-110, TYPICAL. PROVIDE SYMBOL AT EVERY ACCESSIBLE SPACE.
- WHITE THERMOPLASTIC CROSSWALK PER DETAIL K/C-110.
- ACCESSIBLE PARKING SIGN CENTERED ON EACH ACCESSIBLE SPACE PER DETAIL H-1/C-110.
- PROVIDE ULINE 6" RUBBER WHEELSTOP, MODEL NO. H-4608B/Y, OR APPROVED EQUIVALENT. INSTALL PER MANUFACTURER'S INSTRUCTIONS.
- 4" WHITE SOLID PARKING STRIPE PERMANENT PAINT PER KYTC STD SPEC 713, TYPICAL.
- ARROW PAVEMENT MARKING PER DETAIL J/C-110. ARROWS TO BE REFLECTIVE DURABLE WHITE PAINT PER KYTC STD SPEC 714.
- COORDINATE WITH BUILDING PLANS FOR DUMPSTER ENCLOSURE, GATE, AND BOLLARD DETAILS. DUMPSTER ENCLOSURE FOUNDATION SHOULD BEAR COMPLETELY ON BEDROCK. IF DUMPSTER ENCLOSURE FOUNDATION CAN NOT BEAR COMPLETELY ON BEDROCK, CONTRACTOR TO REMOVE EXISTING BEDROCK WITHIN THE DUMPSTER ENCLOSURE FOOTPRINT TO 24" BELOW THE FOUNDATION BEARING ELEVATION AND REPLACE WITH LEAN CLAY COMPACTED TO AT LEAST 98% STANDARD PROCTOR.
- HEAVY DUTY CONCRETE PAVEMENT WITHIN AND EXTENDING 20'-0" BEYOND THE DUMPSTER ENCLOSURE PER DETAIL F/C-110. PROVIDE TOOLED CONTROL JOINTS EQUALLY SPACED AT 10'± O.C. PER DETAIL E/C-110. PROVIDE EXPANSION JOINTS WHERE NEW CONCRETE ABUTS THE DUMPSTER ENCLOSURE WALL & ABUTS EXISTING CONCRETE PER DETAIL D/C-110.
- STEEL PIPE BOLLARDS BETWEEN ALL BAY DOORS AT BUILDING CORNERS AND ON EACH SIDE OF THE GAS METER. COORDINATE WITH BUILDING PLANS FOR DETAILS.



Architecture
Civil Engineering
Landscape Architecture
a: 249 East Main Street
Suite 100
Lexington, Kentucky 40507
o: (859) 254-6623
w: www.cmwbaec.com



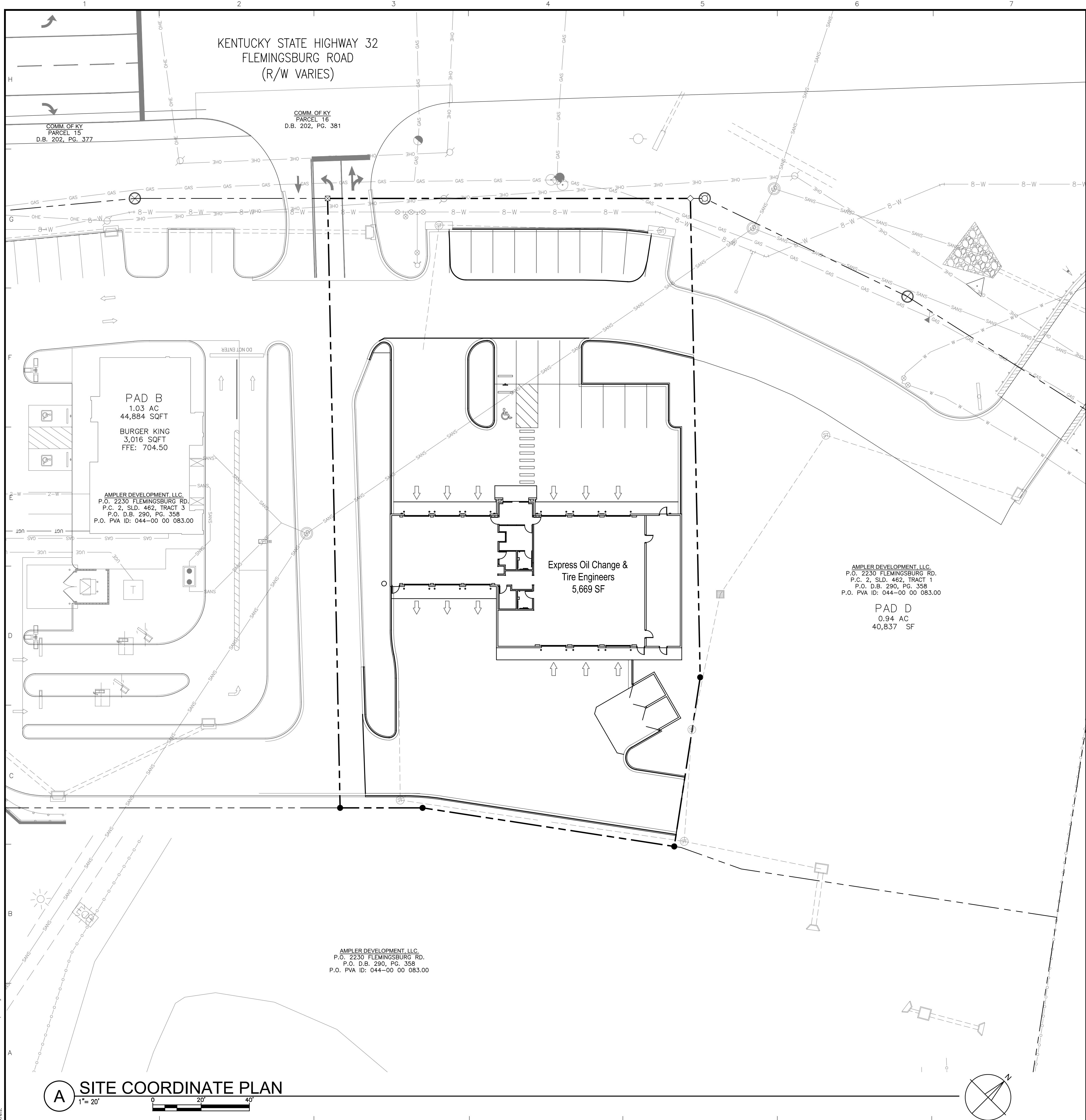
SITE LAYOUT PLAN
EXPRESS OIL CHANGE & TIRE ENGINEERS
2230 FLEMINGSBURG ROAD (KY-32)
MOREHEAD, KENTUCKY

PERMIT DOCUMENTS

Issue Date:	October, 2024
Drawn By:	--
Checked By:	--
Revisions:	
	-
	-
	-
	-
	-
Mark	Date
AHJ SEAL	

Project Number
24018.01
© 2024 CMW

C-102

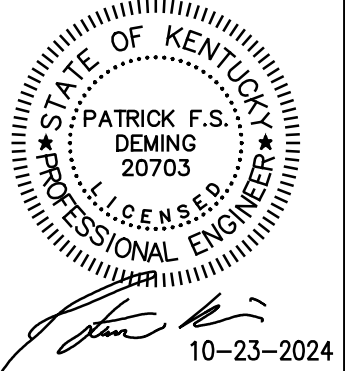


GENERAL NOTES

A. CONTRACTOR TO FIELD VERIFY COORDINATES PRIOR TO LAYOUT FOR NEW CONSTRUCTION.

KEYED NOTES

NOTE: CAD FILE WILL BE ISSUED TO THE AWARDED CONTRACTOR AFTER APPROVALS FROM AUTHORITIES HAVING JURISDICTION ARE COMPLETE.



SITE COORDINATE PLAN
EXPRESS OIL CHANGE & TIRE ENGINEERS
2230 FLEMINGSBURG ROAD (KY-32)
MOREHEAD, KENTUCKY

PERMIT DOCUMENTS

Issue Date:	October, 2024
Drawn By:	-
Checked By:	-
Revisions:	
	-
	-
	-
	-
Mark	Date

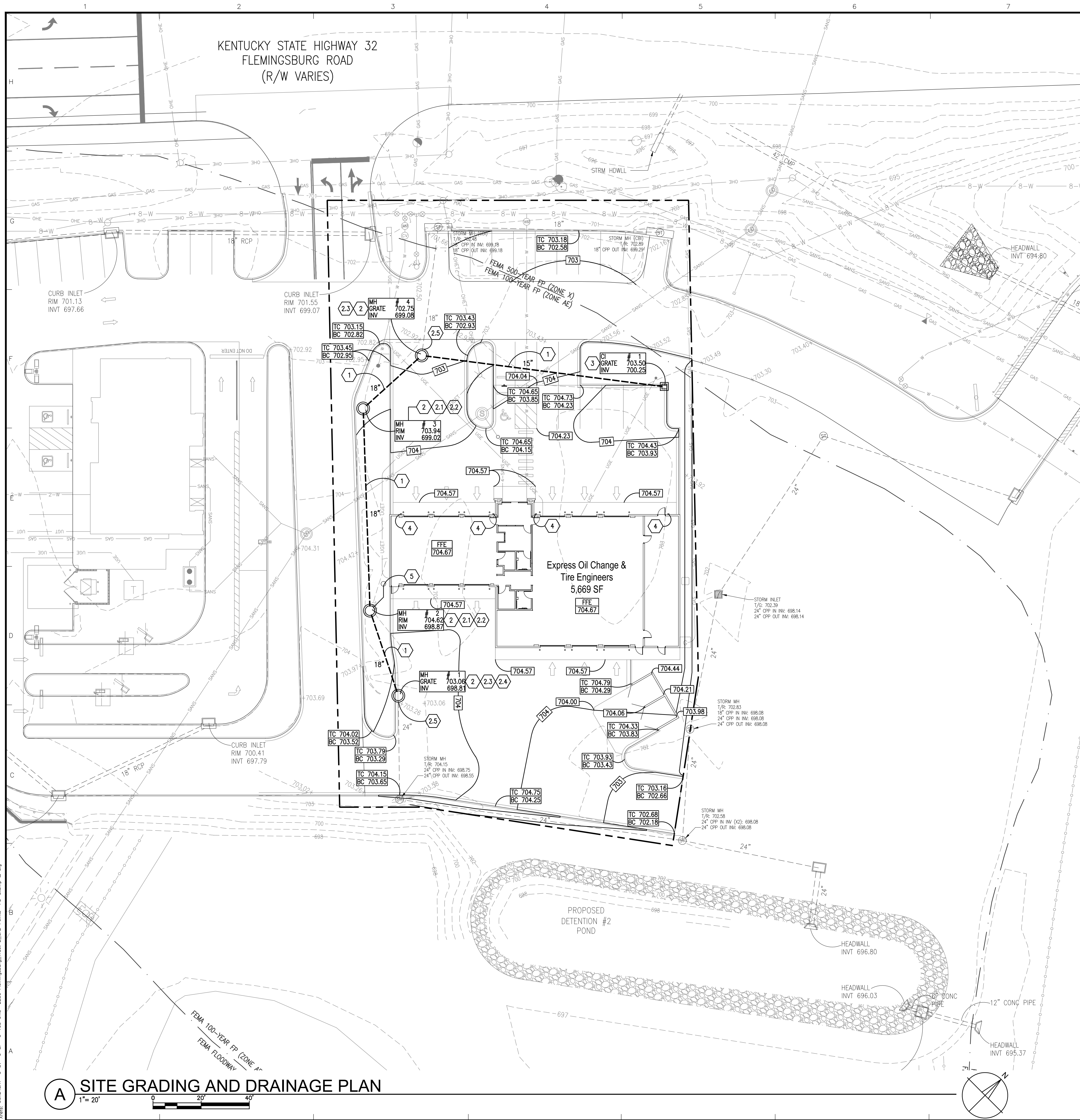
AHJ SEAL

Project Number

24018.01

© 2024 CMW

C-103



GENERAL NOTES

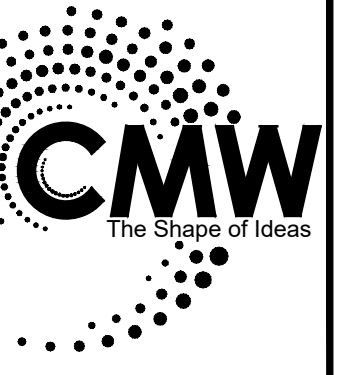
- EXERCISE EXTREME CAUTION WHEN WORKING NEAR EXISTING UTILITY LINES. EXISTING UTILITY INFORMATION IS NOT TO BE TAKEN AS EXACT OR COMPLETE. CONTRACTOR MUST NOTIFY THE UTILITY COMPANIES AND APPROPRIATE AGENCIES AT LEAST 72 HOURS BEFORE EXCAVATION FOR EXACT FIELD LOCATIONS. IT IS THE CONTRACTORS RESPONSIBILITY TO RELOCATE ALL UTILITIES WHICH CONFLICT WITH THE PROPOSED IMPROVEMENTS. DIAL 811 TO CONTACT B.U.D. FOR LOCATION OF EXISTING UTILITIES.
- CONTRACTOR TO FIELD VERIFY DIMENSIONS AND INVERT ELEVATIONS OF DRAINAGE STRUCTURES PRIOR TO ANY DEMOLITION AND NEW CONSTRUCTION. CONTRACTOR IS RESPONSIBLE FOR DAMAGE TO ANY STRUCTURE, PAVEMENT, UTILITY, PIPE, ETC. TO REMAIN AND SHALL REPAIR OR REPLACE THE DAMAGED ITEM AS NECESSARY TO RETURN IT TO PRE-CONSTRUCTION CONDITIONS WITH THE COST BEING INCIDENTAL TO THE CONTRACT AMOUNT.
- MAXIMUM CROSS-SLOPE OF WALK TO BE 1.8%.
- MEET EXISTING GRADES OF ADJACENT FEATURES WITH A SMOOTH FLUSH CONNECTION.
- STORM SEWER PIPE IS TO BE CONNECTED TO STRUCTURES WITH NON-SHRINK GROUT MEETING KYTC SPECIFICATIONS.
- CONTRACTOR SHALL ADHERE TO TERMS AND CONDITIONS OF K.P.D.E.S. GENERAL PERMIT FOR STORMWATER DISCHARGES.
- UNPAVED AREAS DISTURBED DURING CONSTRUCTION ARE TO BE SODDED. SPREAD A MINIMUM OF 4" GOOD, CLEAN, WEED FREE TOPSOIL PRIOR TO LAYING SOD.
- CONTRACTOR TO PROVIDE POSITIVE DRAINAGE IN ALL LAWNS AND PAVEMENT.
- STORM PIPE IS TO BE PROPERLY TRENCHED AND JACKETED WITH COMPACTED CRUSHED STONE.
- STORM STRUCTURES ARE TO BE BACKFILLED COMPLETELY WITH COMPACTED CRUSHED STONE.
- STORM AND UTILITY VALVES, BOXES, AND MANHOLE LIDS REMAINING WITHIN THE PROJECT AREA ARE TO BE ADJUSTED FLUSH WITH FINISHED GRADE WHETHER INDICATED OR NOT.
- COORDINATE WITH SURVEY FOR TEMPORARY BENCHMARK LOCATIONS.
- KENTUCKY TRANSPORTATION CABINET (KYTC) STANDARD SPECIFICATIONS ARE PART OF THESE PLANS AND ARE READILY AVAILABLE AT [HTTP://TRANSPORTATION.KY.GOV/CONSTRUCTION/PAGES/KENTUCKY-STANDARD-SPECIFICATIONS.ASPX](http://TRANSPORTATION.KY.GOV/CONSTRUCTION/PAGES/KENTUCKY-STANDARD-SPECIFICATIONS.ASPX). CONTRACTOR TO KEEP COPY OF THE APPLICABLE KYTC STANDARD SPECIFICATIONS ON-SITE FOR REFERENCE.
- KYTC STANDARD DRAWINGS ARE PART OF THESE PLANS AND ARE READILY AVAILABLE AT [HTTP://TRANSPORTATION.KY.GOV/HIGHWAY-DESIGN/PAGES/STANDARD-DRAWINGS.ASPX](http://TRANSPORTATION.KY.GOV/HIGHWAY-DESIGN/PAGES/STANDARD-DRAWINGS.ASPX). CONTRACTOR MUST KEEP A COPY OF THE APPLICABLE KYTC STANDARD DRAWINGS ON-SITE FOR REFERENCE.
- CONTRACTOR TO PROOF-ROLL THE EXISTING SUB-GRADE WITH A FULLY LOADED TANDEM-AXLE DUMP TRUCK IN THE PRESENCE OF THE GEOTECHNICAL ENGINEER. AREAS THAT PUMP, RUT OR WAVE ARE TO BE SCARIFIED 10" DEEP, MOISTURE CONDITIONED, RE-COMPACTED, AND PROOF-ROLLED AGAIN. AREAS THAT PUMP, RUT OR WAVE AFTER THE SECOND PROOF-ROLL ARE TO BE UNDERCUT AND REPLACED WITH ENGINEERED FILL UNTIL THE EXISTING SUB-GRADE PASSES PROOF-ROLL.
- ON-SITE AND OFF-SITE SOILS TESTED AND ACCEPTED BY THE GEOTECHNICAL ENGINEER CAN BE USED AS ENGINEERED FILL PROVIDED MATERIALS ARE PLACED AND COMPACTED AT THE PROPER MOISTURE CONTENT WITH NO ORGANICS AND NO LARGE ROCK.
- CONTRACTOR TO PROOF-ROLL THE PAVEMENT SUB-GRADE WITH A FULLY LOADED TANDEM-AXLE DUMP TRUCK IN THE PRESENCE OF THE GEOTECHNICAL ENGINEER. AREAS THAT PUMP, RUT OR WAVE ARE TO BE SCARIFIED 10" DEEP, MOISTURE CONDITIONED, RE-COMPACTED, AND PROOF-ROLLED AGAIN. AREAS THAT PUMP, RUT OR WAVE AFTER THE SECOND PROOF-ROLL ARE TO BE UNDERCUT AND REPLACED WITH ENGINEERED FILL UNTIL THE PAVEMENT SUB-GRADE PASSES PROOF-ROLL.
- ALL PAVEMENT SUB-GRADE MUST BE SLOPED TO DRAIN TOWARD DRAINAGE STRUCTURES AND PIPES.
- COMPLETELY BACKFILL ALL SIDES OF ALL DRAINAGE STRUCTURES AND PIPES WITH COMPACTED CRUSHED STONE TO ALLOW WATER SEEPING UNDER THE PAVEMENT TO DRAIN OUT.
- ALL UNDERGROUND UTILITIES AND DRAINS REQUIRE AS-BUILT SURVEY. GENERAL CONTRACTOR RESPONSIBLE TO COORDINATE WITH LOCAL AUTHORITIES HAVING JURISDICTION ON AS-BUILT REQUIREMENTS.

KEYED NOTES

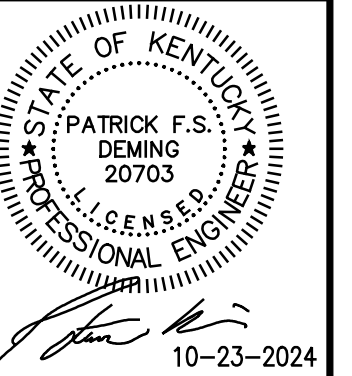
- DUAL WALL HDPE STORM SEWER PIPE (ADS N-12, OR APPROVED EQUIVALENT) PER DETAIL D/C-111. SEE NOTE ON THIS PLAN FOR PIPE SIZE.
- PRECAST CONCRETE SHALLOW MANHOLE (MH) PER KYTC STD DWG RDM-001.
- FABRICATE THIS MH WITH 6" OF GRADE RINGS SO TOP SLAB IS NOT EXPOSED.
- THIS MH IS TO HAVE JR HOE MODEL MC-375 SOLID COVER WITH 'STORM SEWER' LETTERING, OR APPROVED EQUIVALENT.
- THIS MH IS TO HAVE JR HOE MODEL MCB-375 BAR GRATE, OR APPROVED EQUIVALENT.
- SET/ROTATE THIS MH TOP SLAB SUCH THAT GRATE IS WITHIN THE PAVEMENT.
- CONNECT MH TO EXISTING STORM SEWER PIPE USING THE BELL OF A SHORT LENGTH OF NEW PIPE. NEW PIPE AND EX PIPE MUST HAVE THE SAME OUTSIDE DIAMETER. CONTRACTOR TO FIELD DETERMINE OUTSIDE DIAMETER PRIOR TO ORDERING MATERIALS.
- PRECAST CONCRETE CURB INLET (CI) PER KYTC STD DWG RDB-320.
- DOWNSPOUTS ARE TO HAVE A PRE-FINISHED ELBOW AND SPLASH ONTO THE PAVEMENT. COORDINATE WITH BUILDING PLANS FOR EXACT DOWNSPOUT LOCATIONS.
- EXTEND 2" DISCHARGE PIPE FROM BUILDING SUMP PUMP TO NEAREST DRAIN INLET WITH AT LEAST 18" COVER DEPTH. COORDINATE WITH BUILDING PLANS FOR EXACT LOCATION AND DETAILS OF PIT, SUMP PUMP, AND DISCHARGE PIPE.

PIPE CHART

PIPE NO	FROM STR	INVERT	TO STR	INVERT	PIPE LENGTH (ft)	PIPE DIA (in)	MAT'L	SLOPE (%)	DRAIN AREA (ft ²)	Qd, 25-YR (cfs)	Qc, CAPACITY (Qc cfs)	Qd/Qc (%)
D3.1 TO D3	D3.1	698.55	D3	698.08	115	24	HDPE	0.41	0	2.72	15.67	17
MH01 TO D3.1	MH01	698.81	D3.1	698.75	39	24	HDPE	0.15	5146	2.73	9.61	28
MH02 TO MH01	MH02	698.87	MH01	698.81	33	18	HDPE	0.18	0	2.13	4.85	44
MH03 TO MH02	MH03	699.02	MH02	698.87	80	18	HDPE	0.19	0	2.14	4.93	43
MH04 TO MH03	MH04	699.08	MH03	699.02	29	18	HDPE	0.21	5762	2.15	5.18	42
CI01 TO MH04	CI01	700.47	MH04	699.08	99	15	HDPE	1.40	4703	0.65	13.48	5
D3.3 TO MH04	D3.3	699.18	MH04	699.08	51	18	HDPE	0.20	3651	0.81	5.04	16
D3.4 TO D3.3	D3.4	699.29	D3.3	699.18	88	18	HDPE	0.13	3037	0.34	4.02	8



Architecture
Civil Engineering
Landscape Architecture
Suite 100
Lexington, Kentucky 40507
o: (859) 254-6623
w: www.cmwae.com



SITE GRADING AND DRAINAGE PLAN
EXPRESS OIL CHANGE & TIRE ENGINEERS
2230 FLEMINGSBURG ROAD (KY-32)
MOREHEAD, KENTUCKY

PERMIT DOCUMENTS

Issue Date:	October, 2024
Drawn By:	-
Checked By:	-
Revisions:	
	10-8-2024
	-
	-
	-
	-
Mark	Date
AHJ SEAL	

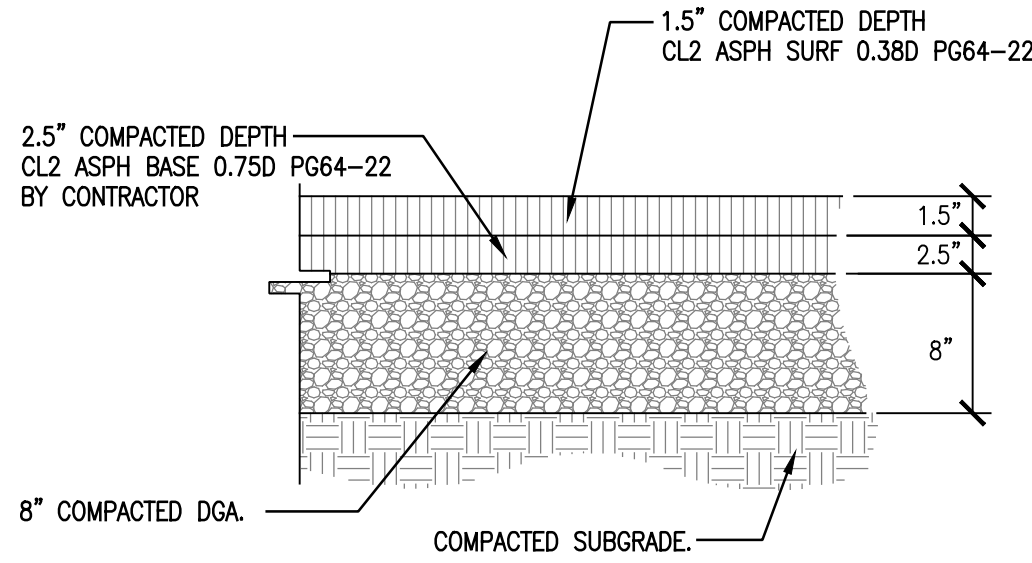
Project Number
24018.01

© 2024 CMW

C-104

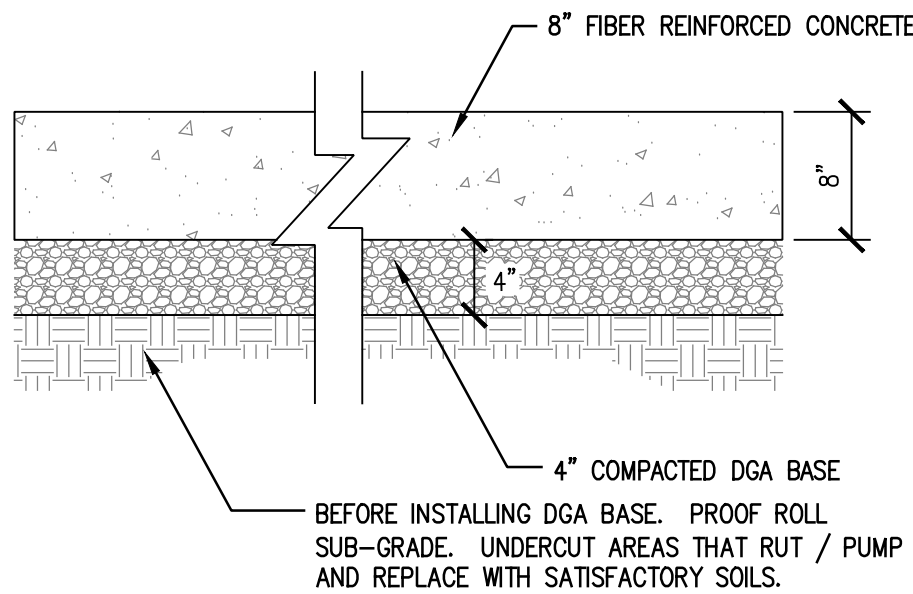
PLOT DATE: Wednesday, October 23, 2024 10:24 AM

NOTE:
1. CONTRACTOR TO PROOFROLL PARKING LOT SUBGRADE IN THE PRESENCE OF A GEOTECHNICAL ENGINEER PRIOR TO ANY FILL OR GRANULAR BACKFILL PLACEMENT. SUB-GRADE THAT RUTS/PUMPS DEEPER THAN 1/2" MUST TO BE UNDER-CUT, REPLACED, AND PROOF-ROLLED AGAIN.



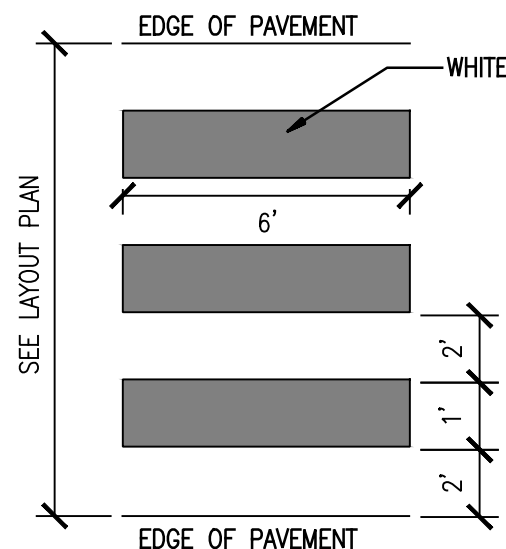
A BITUMINOUS PAVEMENT
N.T.S.

NOTES:
-CONCRETE TO BE CLASS A (3,500 PSI, MINIMUM).
-CONCRETE TO HAVE AN AIR CONTENT OF 6% ± 2%.
-CONCRETE SLUMP TO BE 3" ± 1".
-CONCRETE TO BE REINFORCED WITH MACRO-SYNTHETIC FIBERGLASS FIBERS AT A RATE OF 7 LBS PER CUBIC YARD PER ASTM C1116.
-USE WATER-REDUCING AND RETARDING ADMIXTURE WHEN REQUIRED BY HIGH TEMPERATURES, LOW HUMIDITY, OR OTHER ADVERSE PLACEMENT CONDITIONS PER INDUSTRY STANDARDS.
-PROVIDE CLEAR, WATERBORNE MEMBRANE-FORMING CURING COMPOUND PER INDUSTRY STANDARDS.
-PROVIDE MEDIUM BROOM FINISH, UNLESS OTHERWISE NOTED.
-SUB-GRADE TO BE PROOF-ROLLED WITH A FULLY LOADED TANDEM AXLE DUMP TRUCK WEIGHING AT LEAST 15 TONS. SUB-GRADE THAT RUTS/PUMPS DEEPER THAN 1/2" MUST TO BE UNDER-CUT, REPLACED, AND PROOF-ROLLED AGAIN.



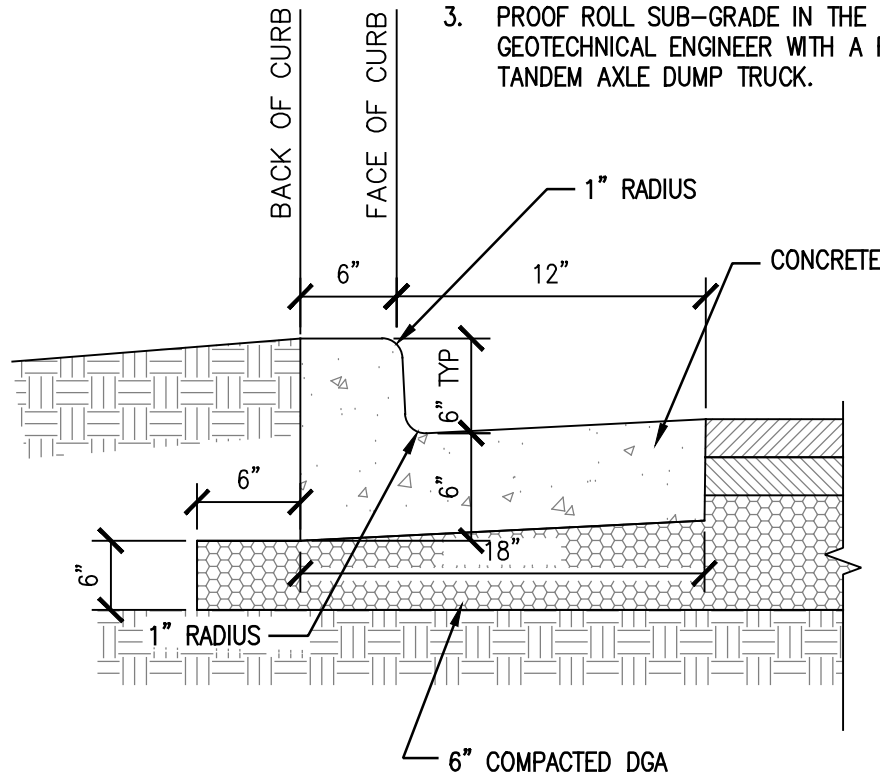
F HEAVY DUTY CONCRETE PAVEMENT
N.T.S.

NOTES:
1. INSTALLATION OF PAVEMENT MARKINGS SHALL BE ACCOMPLISHED BY APPLYING WHITE PREFORMED THERMOPLASTIC MARKING MATERIAL SELECTED FROM THE KENTUCKY TRANSPORTATION CABINET MATERIALS APPROVED LIST.
2. PAVEMENT MARKINGS SHALL MEET THE REQUIREMENTS OF THE KENTUCKY TRANSPORTATION CABINET SPECIFICATIONS, LATEST EDITION.



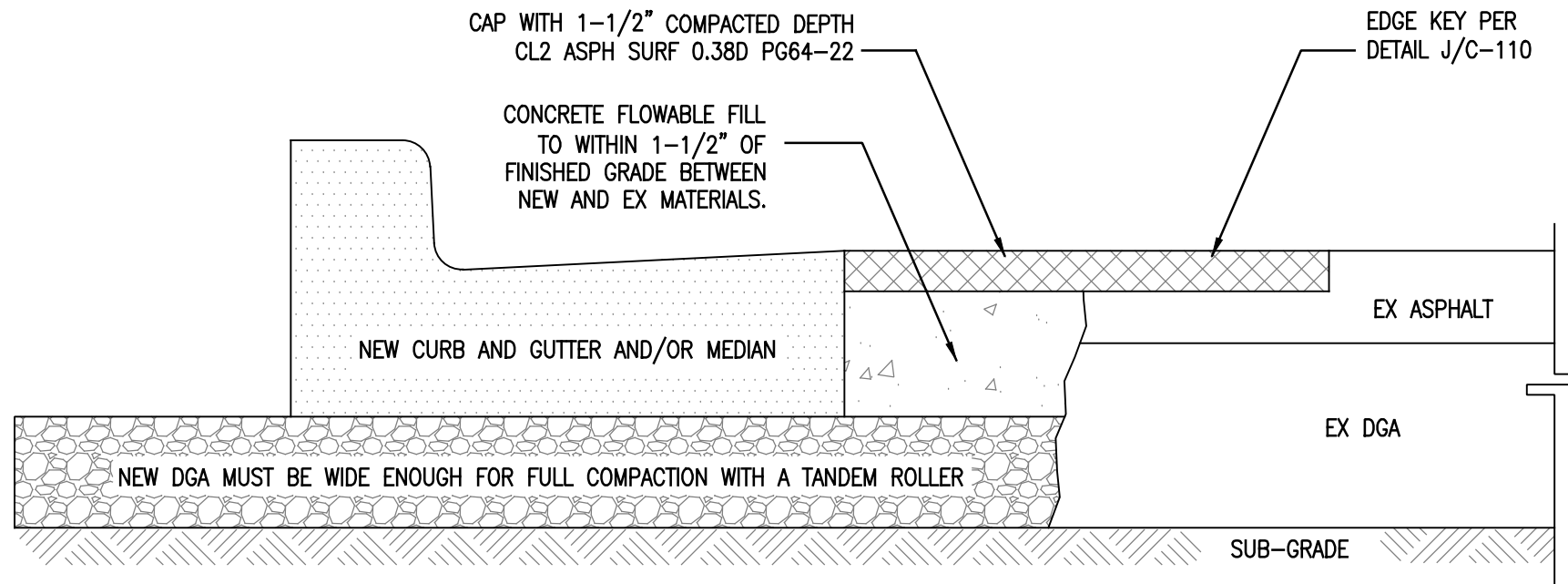
K CROSSWALK
N.T.S.

NOTES:
1. CONCRETE SHALL BE CLASS A PER THE CURRENT KENTUCKY TRANSPORTATION CABINET SPECIFICATIONS.
2. GUTTER SLOPE TO MATCH ADJACENT PAVEMENT, TRANSVERSE AND LONGITUDINAL.
3. PROOF ROLL SUB-GRADE IN THE PRESENCE OF THE GEOTECHNICAL ENGINEER WITH A FULLY LOADED TANDEM AXLE DUMP TRUCK.

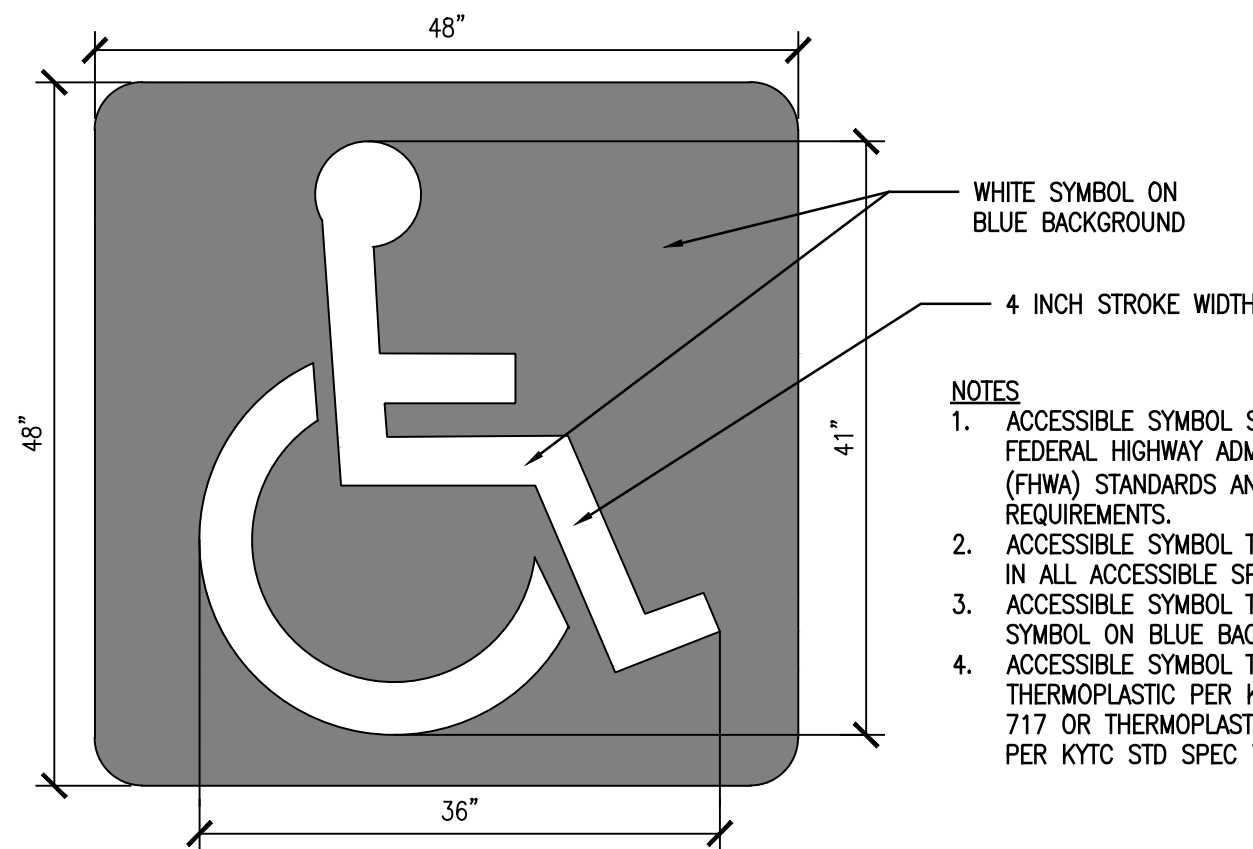


B CONCRETE CURB AND GUTTER
N.T.S.

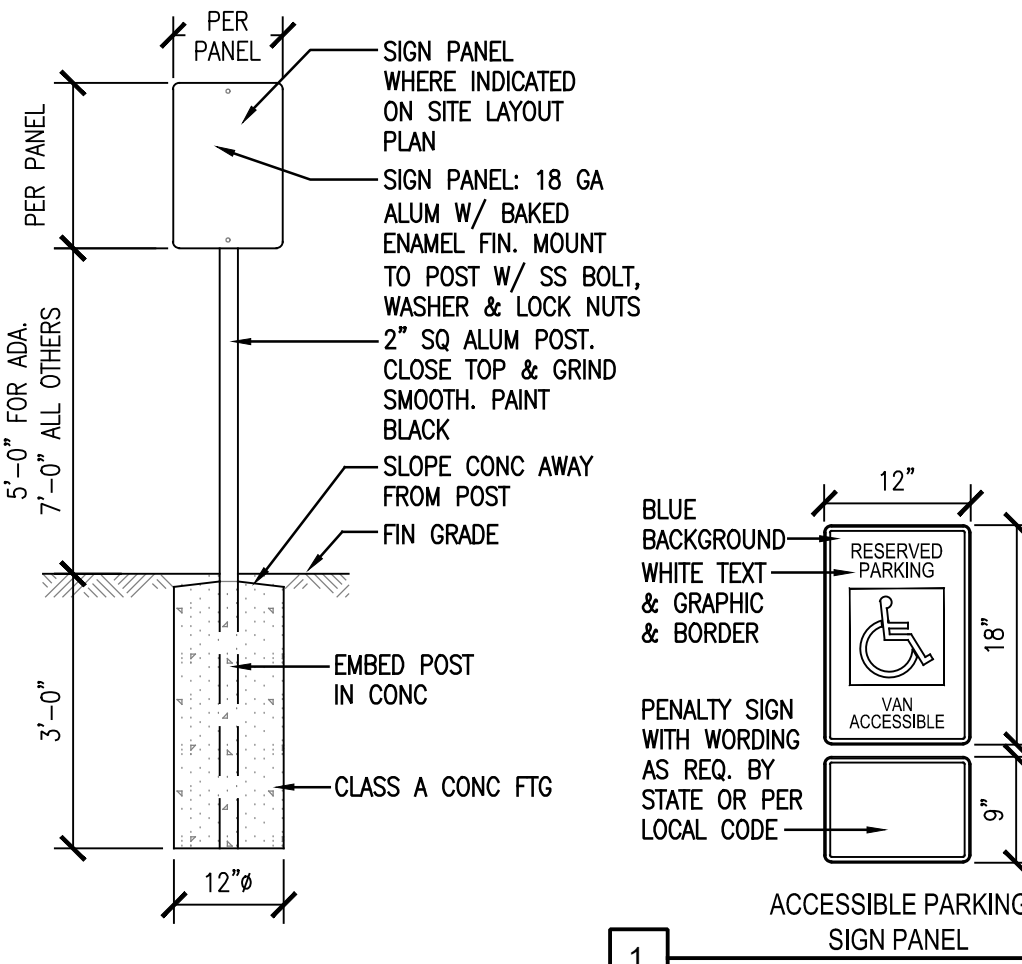
NOTES:
- SUBSTITUTE CONCRETE FLOWABLE FILL FOR ASPHALT BASE WHERE SPACE WILL NOT ALLOW FOR FULL COMPACTION WITH A TANDEM ROLLER.
- FLOWABLE FILL TO MEET THE REQUIREMENTS OF SECTION 601 OF THE KENTUCKY TRANSPORTATION CABINET (KYTC) STANDARD SPECIFICATIONS.



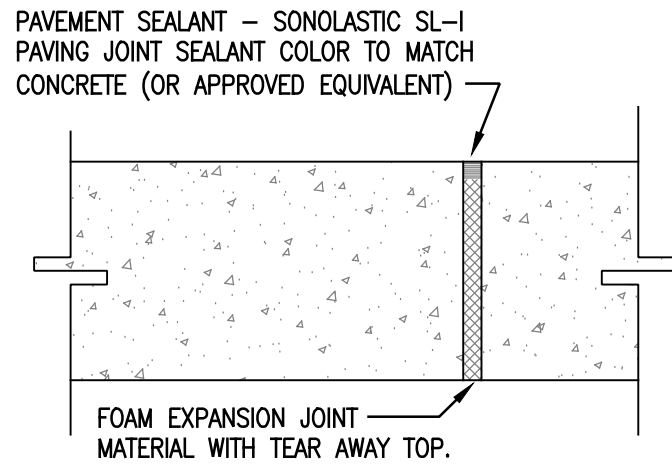
C FLOWABLE FILL
N.T.S.



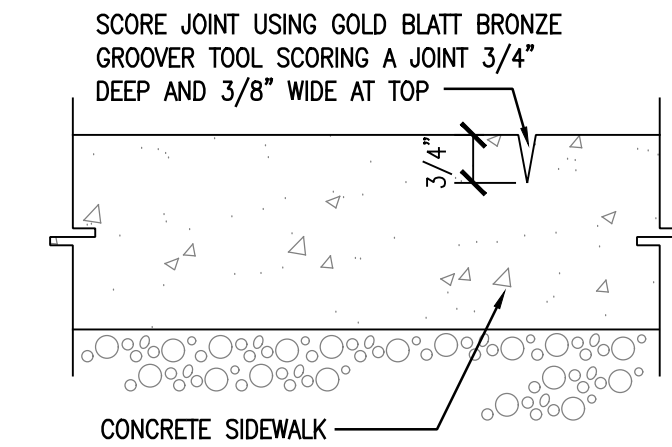
G THERMOPLASTIC ACCESSIBLE PARKING SYMBOL
N.T.S.



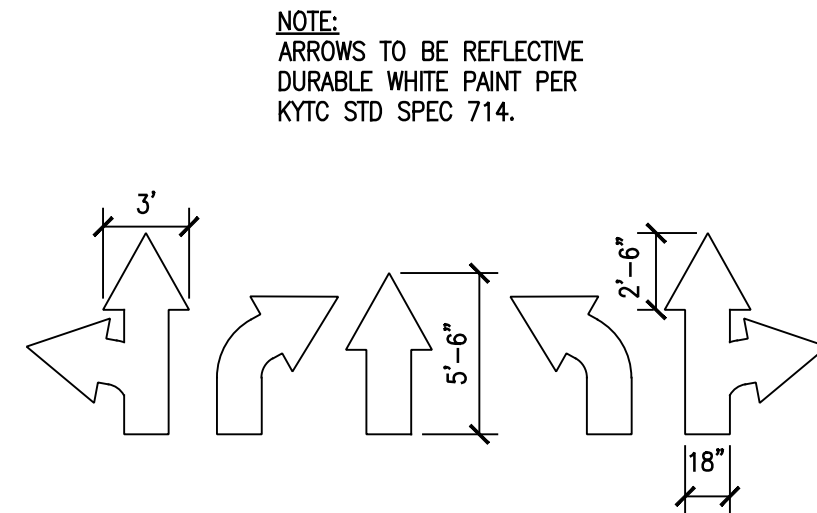
H SITE SIGNAGE
N.T.S.



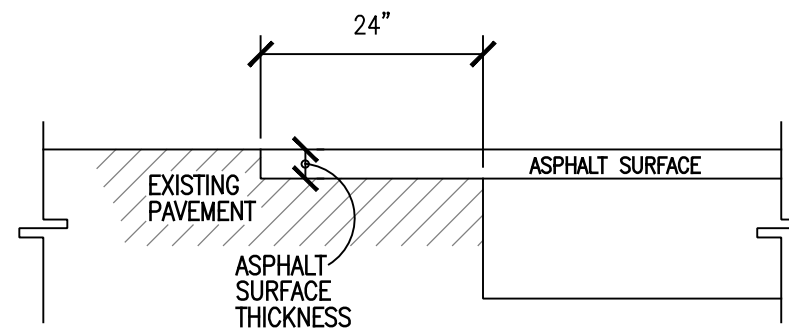
D EXPANSION JOINT
N.T.S.



E CONTROL JOINT
N.T.S.

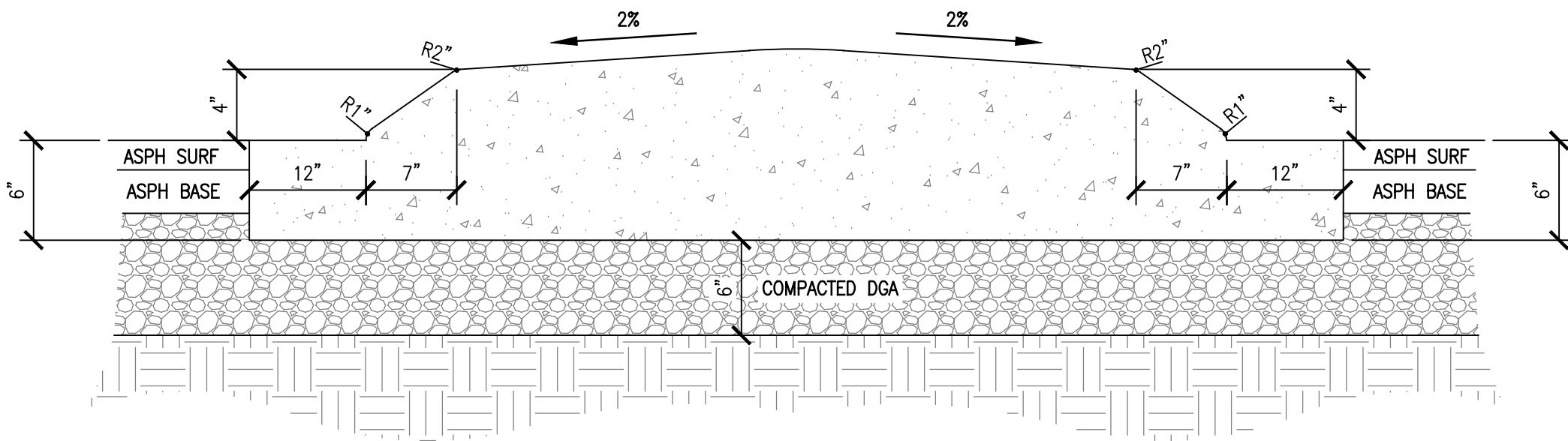


J TRAFFIC ARROWS
N.T.S.

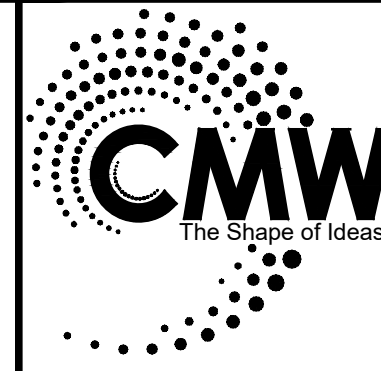


M BITUMINOUS ASPHALT EDGE KEY
N.T.S.

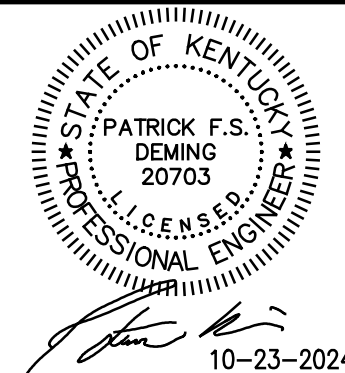
NOTES:
1. CONCRETE SHALL BE CLASS A PER THE CURRENT KENTUCKY TRANSPORTATION CABINET SPECIFICATIONS.
2. GUTTER SLOPE TO MATCH ADJACENT PAVEMENT, TRANSVERSE AND LONGITUDINAL.
3. PROOF ROLL SUB-GRADE IN THE PRESENCE OF THE GEOTECHNICAL ENGINEER WITH A FULLY LOADED TANDEM AXLE DUMP TRUCK.



L CONCRETE ISLAND CURB, GUTTER AND MEDIAN
N.T.S.



Architecture
Civil Engineering
Landscape Architecture
a: 249 East Main Street
Suite 100
Lexington, Kentucky 40507
o: (859) 254-8623
w: www.cmwsec.com



SITE DETAILS
EXPRESS OIL CHANGE & TIRE ENGINEERS
2230 FLEMINGSBURG ROAD (KY-32)
MOREHEAD, KENTUCKY

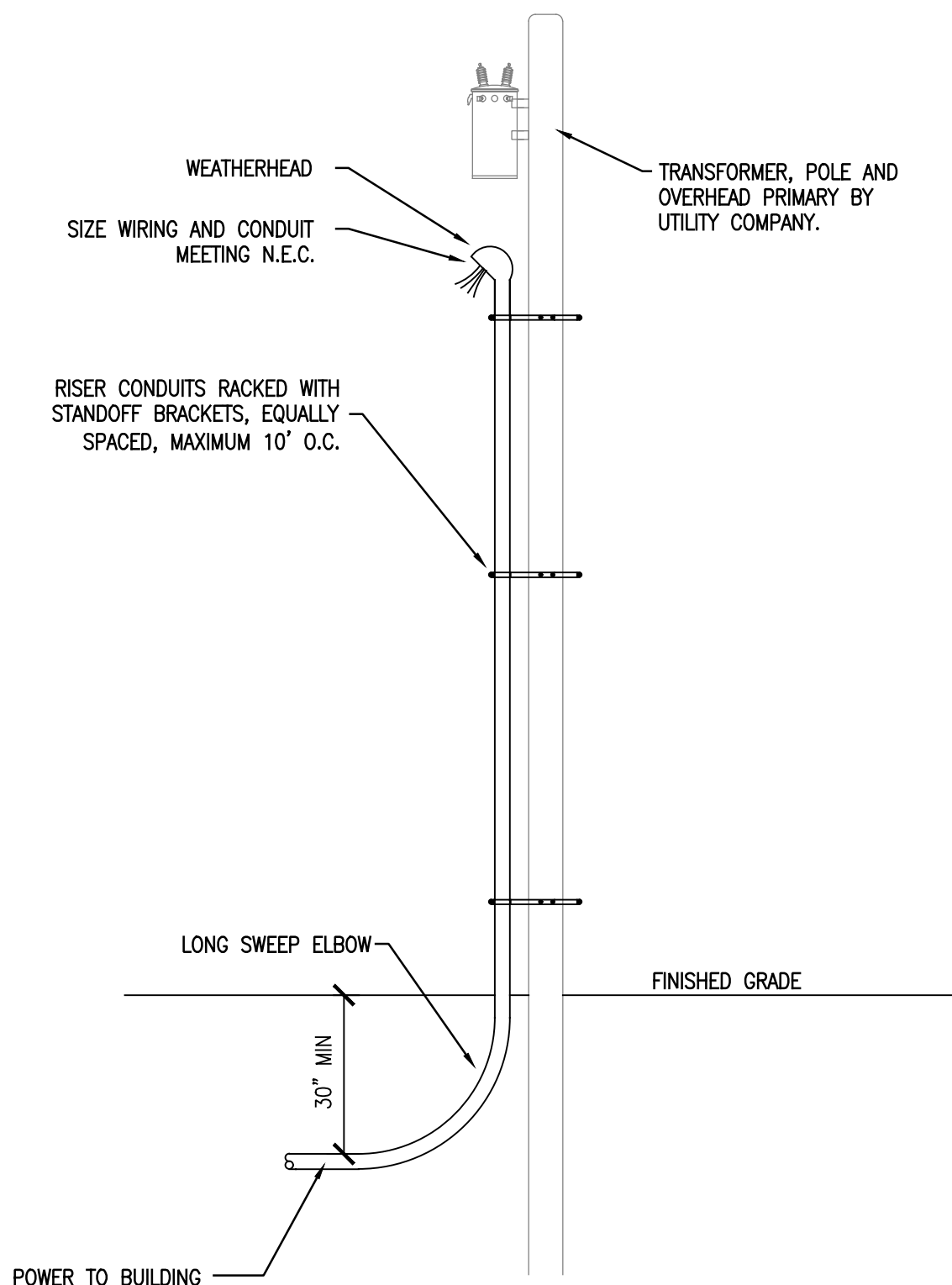
PERMIT DOCUMENTS

Issue Date:	October, 2024
Drawn By:	--
Checked By:	--
Revisions:	
Mark	Date
AHJ SEAL	

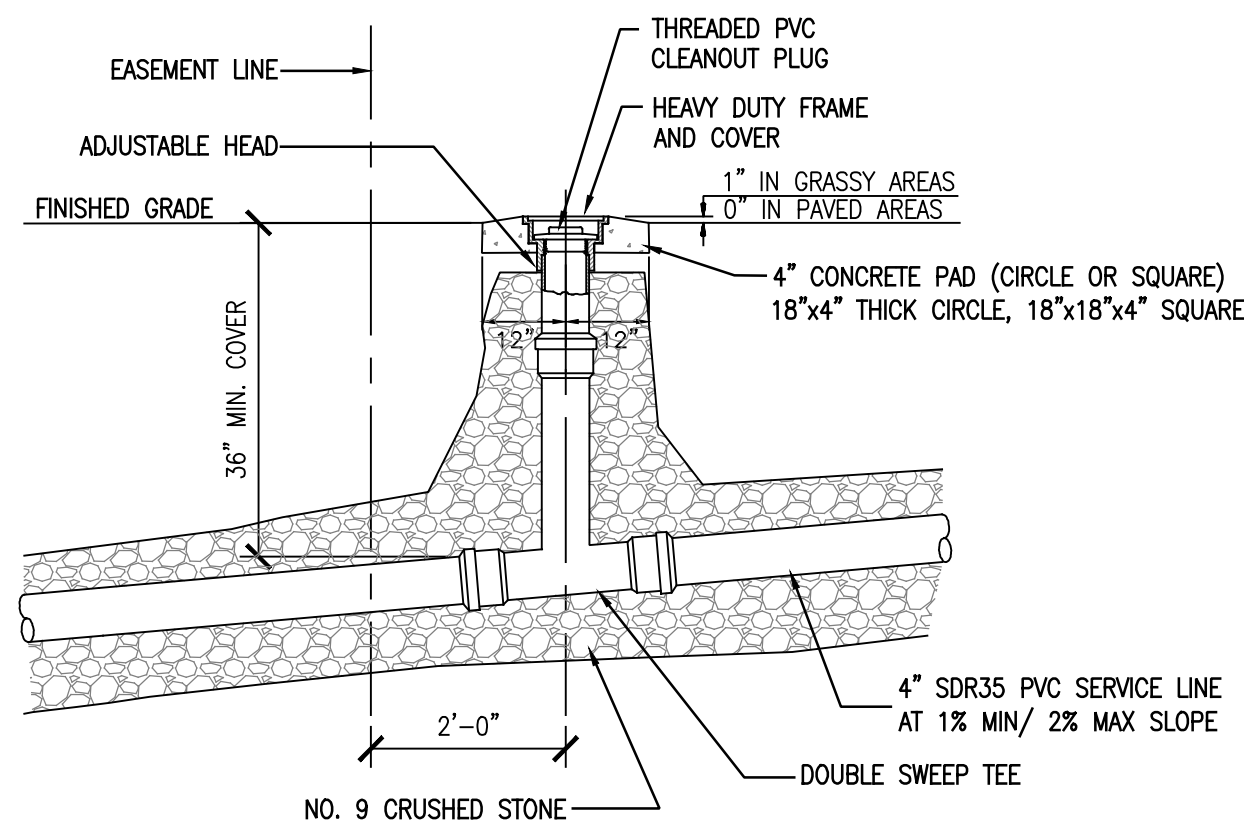
Project Number
24018.01

© 2024 CMW

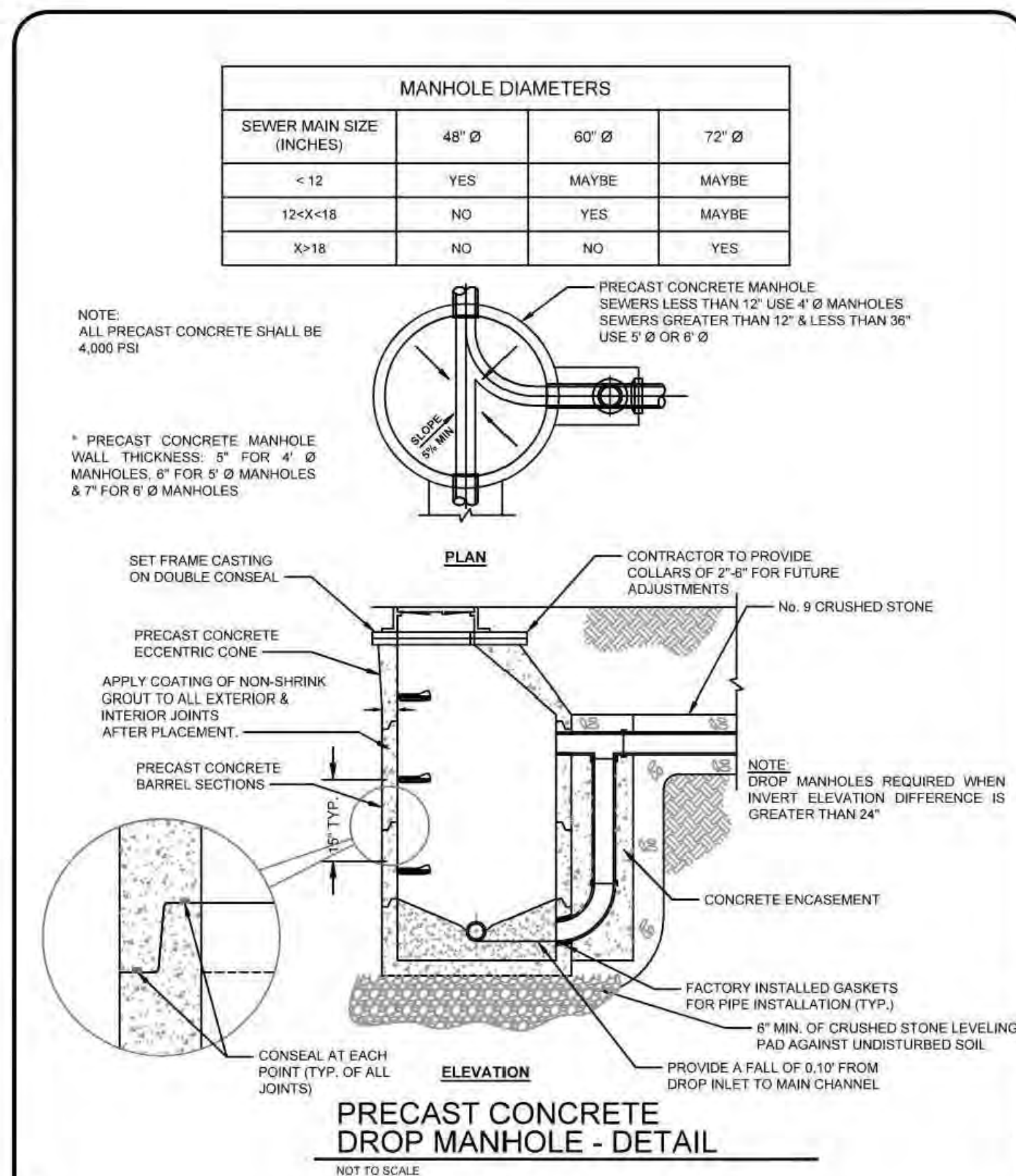
C-110



A POLE MOUNTED ELECTRICAL SERVICE
N.T.S.



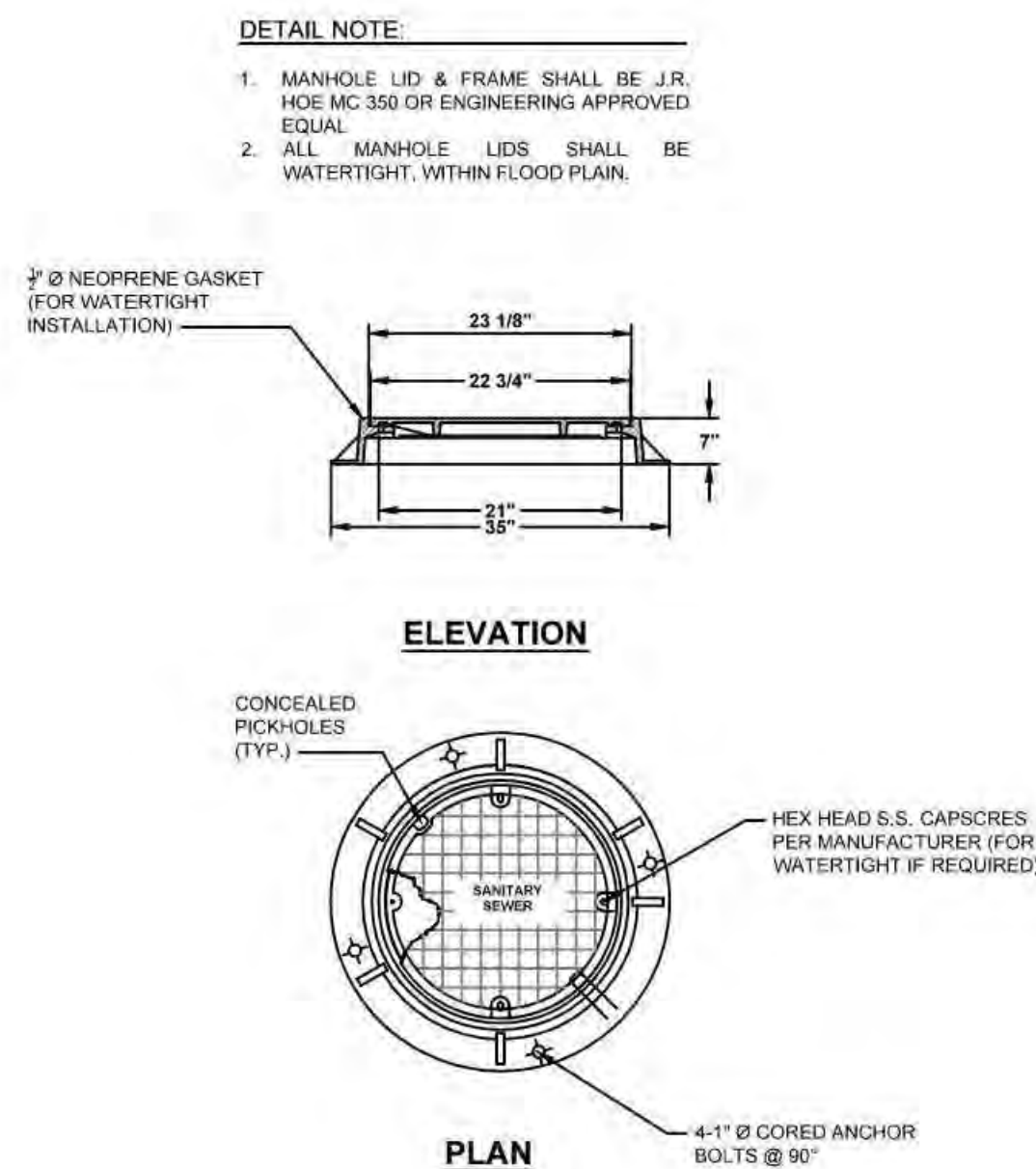
B SANITARY SEWER CLEANOUT
N.T.S.



MOREHEAD UTILITY
PLANT BOARD
133 SOUTH WILSON AVE.
MOREHEAD, KY 40351

GRAVITY SANITARY SEWER STANDARD DETAIL
PRECAST CONCRETE DROP MANHOLE

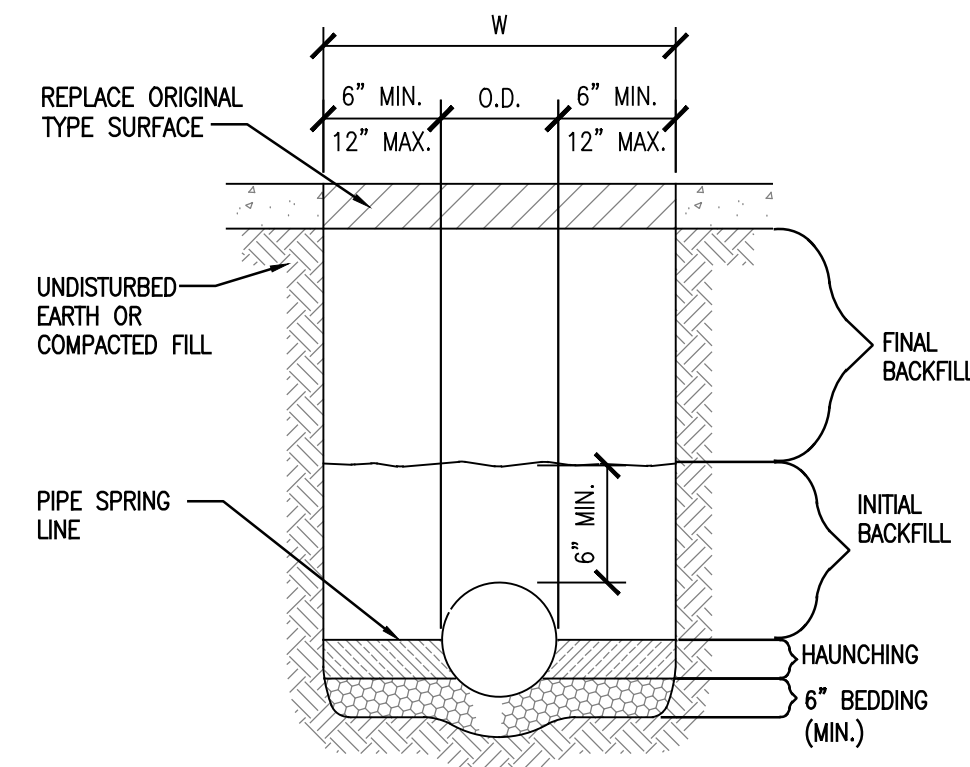
Date: 07/23/2021
Revision Date: 01/14/2022
Dwg No: SS-003



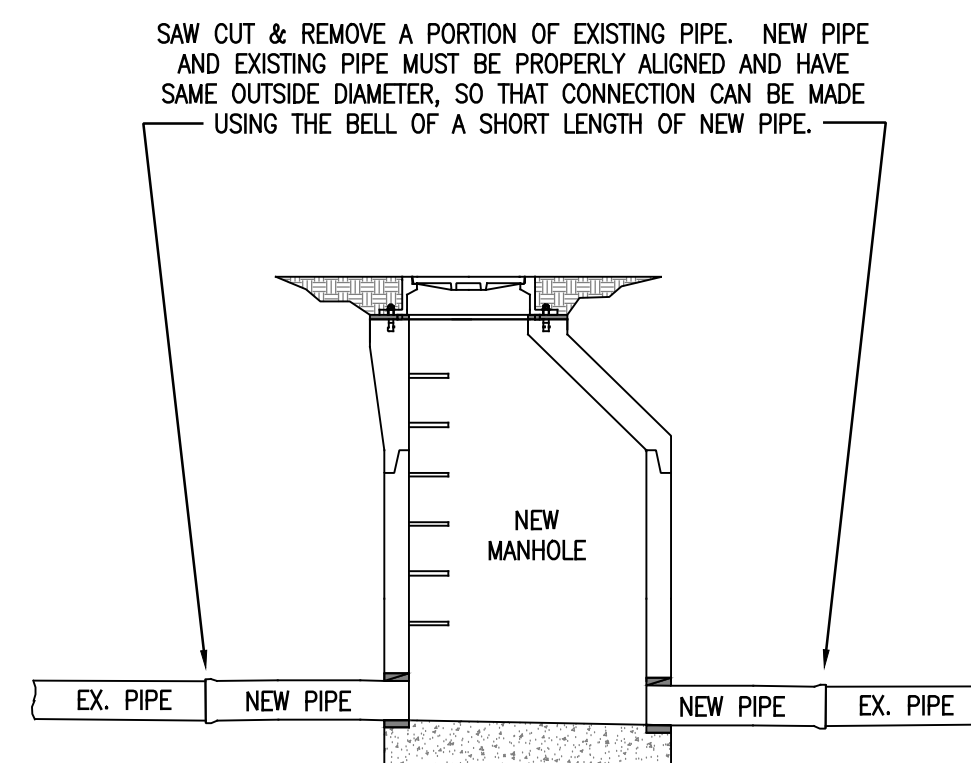
MOREHEAD UTILITY
PLANT BOARD
133 SOUTH WILSON AVE.
MOREHEAD, KY 40351

GRAVITY SANITARY SEWER STANDARD DETAIL
STANDARD WATERTIGHT MANHOLE LID & FRAME

Date: 07/23/2021
Revision Date: 01/14/2022
Dwg No: SS-008



D TRENCHING AND BEDDING
N.T.S.



F SANITARY SEWER CONNECTION
N.T.S.

GENERAL NOTE:
MATERIALS AND METHODS ARE TO MEET THE REQUIREMENTS OF THE KENTUCKY TRANSPORTATION CABINET SPECIFICATIONS, LATEST EDITION.

PAVEMENT REPAIR NOTES:
1. REPLACE ASPHALT, CONCRETE, CURB, AND STONE BASE WITH SAME TYPE & DEPTH AS EXISTING.
2. ASPHALT, CONCRETE, & STONE BASE MATERIALS AND METHODS ARE TO MEET THE REQUIREMENTS OF THE KENTUCKY TRANSPORTATION CABINET SPECIFICATIONS, LATEST EDITION.
3. COMPLETELY BACKFILL TRENCHES WITH COMPACTED CRUSHED STONE AS CONSTRUCTED IN ORDER TO MAINTAIN TRAFFIC.

LANDSCAPE REPAIR NOTES:
1. REPLACE GRASS, TOPSOIL, TREES, AND LANDSCAPING WITH SAME TYPE & DEPTH AS EXISTING.
2. SPREAD AT LEAST 4\"/>

TRENCHING AND BEDDING NOTES
1. BEDDING SHALL BE NO. 9 CRUSHED STONE WORKED BY HAND AND COMPACTED.
2. HAUNCHING SHALL BE NO. 9 CRUSHED STONE WORKED AROUND THE PIPE BY HAND TO ELIMINATE VOIDS AND COMPACTED.
3. INITIAL BACKFILL SHALL BE NO. 9 CRUSHED STONE WORKED BY HAND AND COMPACTED.
4. FINAL BACKFILL IN PAVED AREAS SHALL BE NO. 9 COMPACTED CRUSHED STONE.
5. FINAL BACKFILL IN LANDSCAPE AREAS CAN BE SELECT SOIL COMPACTED TO 95% STANDARD PROCTOR WITH NO ROCK GREATER THAN 3/4 INCH.
6. MATERIALS SHALL BE INSTALLED IN MAXIMUM 8\"/>